

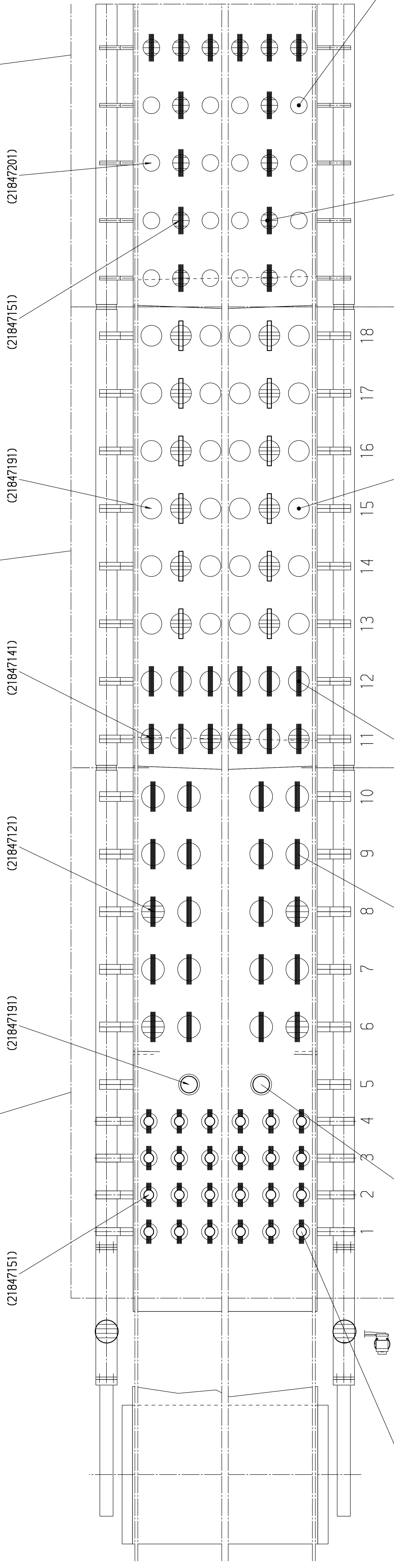
Mittbereich
centre zone

Mittbereich
centre zone

Einlaufbereich
infeed zone

Mittbereich
centre zone

Mittbereich
centre zone



- (D) Differential-Zylinder ø 340/220
- (GB) differential cylinder
- (F) cylindre ø 340/220
- (E) cilindro ø 340/220
- (I) Cilindro ø 340/220

- (D) Differential-Zylinder ø 400/300
- (GB) differential cylinder
- (F) cylindre ø 400/300
- (E) cilindro ø 400/300
- (I) Cilindro ø 400/300

- (D) Differential-Zylinder ø 400/270
- (GB) differential cylinder
- (F) cylindre ø 400/270
- (E) cilindro ø 400/270
- (I) Cilindro ø 400/270

- (D) Plunger-Zylinder ø 400/300
- (GB) plunger cylinder
- (F) cylindre à piston plongeur ø400/300
- (E) cilindro de embolo buzo ø400/300
- (I) cilindro stantuffo tuffante ø400/300

- (D) Differential-Zylinder ø 440/300
- (GB) differential cylinder
- (F) cylindre ø 440/300
- (E) cilindro ø 440/300
- (I) Cilindro ø 440/300

- (D) Plunger-Zylinder ø400/300
- (GB) plunger cylinder
- (F) cylindre ø 400/300
- (E) cilindro ø 400/300
- (I) Cilindro ø 400/300

- (D) Differential-Zylinder ø 340/240
- (GB) differential cylinder
- (F) cylindre ø 340/240
- (E) cilindro ø 340/240
- (I) cilindro stantuffo tuffante ø340/240

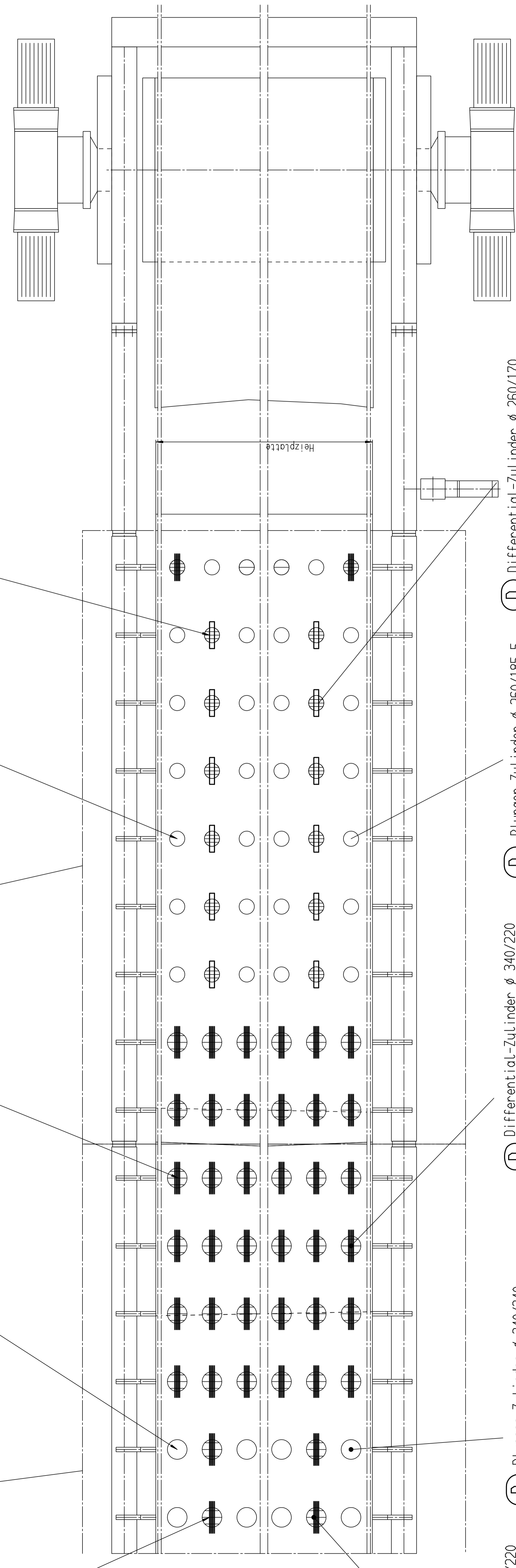
- (D) Differential-Zylinder ø 340/240
- (GB) differential cylinder
- (F) cylindre ø 340/240
- (E) cilindro ø 340/240
- (I) cilindro stantuffo tuffante ø340/240

Zylinder	Dichtungssätze
D440/327,5/300	21847121
D400/300/270	21847141
D340/240/220	21847151
D260/185,5/170	21847171
P400/300	21847191
P340/240	21847201
P260/185,5	21847211
P440/330	20975411

Für: A868; A872; A878; A881; A882; A889; A896; A903; A926. 01; A946; A970

Ausgleichbereich
variable zone

Mittbereich
centre zone



- (D) Differential-Zylinder ø 340/220
- (GB) differential cylinder
- (F) cylindre ø 340/220
- (E) cilindro ø 340/220
- (I) cilindro stantuffo tuffante ø340/240

- (D) Differential-Zylinder ø 340/220
- (GB) differential cylinder
- (F) cylindre ø 340/220
- (E) cilindro ø 340/220
- (I) cilindro stantuffo tuffante ø340/240

- (D) Plunger-Zylinder ø 400/300
- (GB) plunger cylinder
- (F) cylindre à piston plongeur ø400/300
- (E) cilindro de embolo buzo ø400/300
- (I) cilindro stantuffo tuffante ø400/300

- (D) Differential-Zylinder ø 440/300
- (GB) differential cylinder
- (F) cylindre ø 440/300
- (E) cilindro ø 440/300
- (I) Cilindro ø 440/300

- (D) Plunger-Zylinder ø 440/300
- (GB) plunger cylinder
- (F) cylindre à piston plongeur ø440/300
- (E) cilindro de embolo buzo ø440/300
- (I) cilindro stantuffo tuffante ø440/300

- (D) Differential-Zylinder ø 400/270
- (GB) differential cylinder
- (F) cylindre ø 400/270
- (E) cilindro ø 400/270
- (I) Cilindro ø 400/270

- (D) Differential-Zylinder ø 340/240
- (GB) differential cylinder
- (F) cylindre ø 340/240
- (E) cilindro ø 340/240
- (I) cilindro stantuffo tuffante ø340/240

- (D) Differential-Zylinder ø 340/240
- (GB) differential cylinder
- (F) cylindre ø 340/240
- (E) cilindro ø 340/240
- (I) cilindro stantuffo tuffante ø340/240

- (D) Differential-Zylinder ø 260/185,5
- (GB) differential cylinder
- (F) cylindre ø 260/185,5
- (E) cilindro ø 260/185,5
- (I) cilindro stantuffo tuffante ø260/170

Stempel

Siempelkamp
Maschinen- und Anlagenbau GmbH & Co. KG

6 ES000004 F

Pressezylinder

Siempelkamp

Zeichnungsänderungen nur über CAD

Druck: 1:25

Blatt: 1

Material: 1.25

Stahl

Stempel

Siempelkamp

Stempel

Siempelkamp

Stempel

Siempelkamp

Stempel

Siempelkamp

Stempel

Siempelkamp

Stempel

Siempelkamp

Stempel

Siempelkamp

Stempel

Siempelkamp